

THE ART OF PHOTOGRAPHING YOUR WORK



Have you ever sold a picture, then realised that the only photo you have of it is rather poor quality? Many artists have experienced this frustration and regretted not photographing their work more carefully.

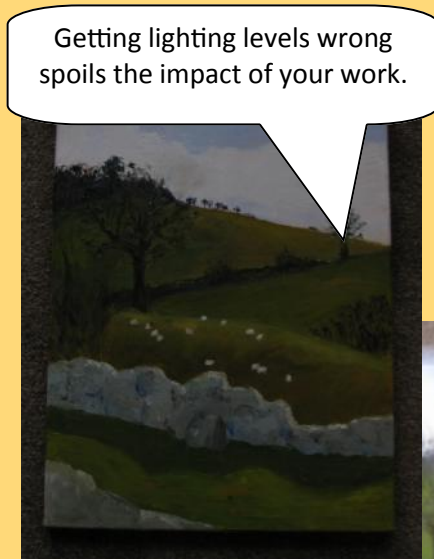
Good photos make your work look more professional on websites and in portfolios and can be used to make prints of your work, for example, if you decide to make greetings cards later.

Top tips

- ☺ Firstly and most importantly, use the best quality camera that you can get your hands on. Borrow from a friend if necessary.
- ☺ Take several different photos of each work, using different camera settings and putting the picture in different places. This means you can choose the best of the bunch to represent your work.
- ☺ Try photographing your work outside on a dull day. Bright sunshine can cause problems with shadows and reflections, but daylight will bring out the colours in your work best.
- ☺ If you have to photograph inside, think carefully about lighting, using natural light wherever possible.
- ☺ Photograph the picture again, if you are not satisfied with the quality of the photo you already have.
- ☺ Talk to a friend who will give you an honest opinion!



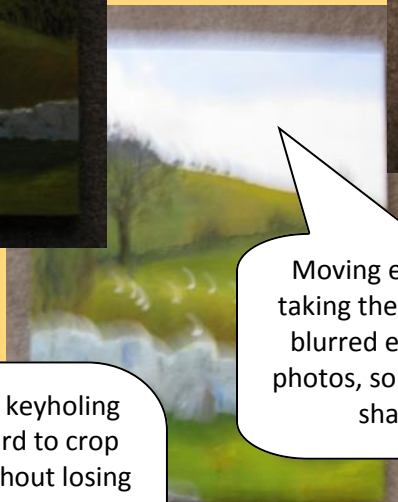
A cluttered background detracts from your work and can be hard to crop out of the final photo.



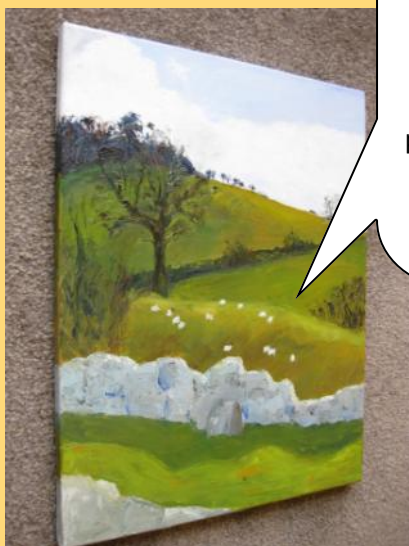
Getting lighting levels wrong spoils the impact of your work.



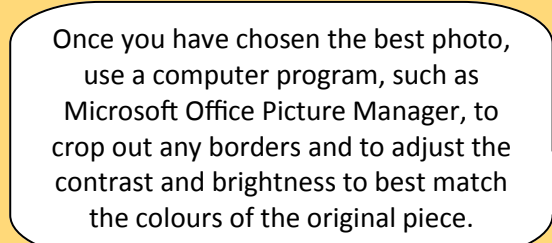
Using a flash can cause bright spots and glare.



Moving even slightly whilst taking the photo can create a blurred effect. Take several photos, so you can choose the sharpest image.



This effect is known as keyholing and it makes it very hard to crop the background out without losing part of the picture too. Avoid this by positioning the camera perpendicular to the centre of the picture and checking that the edges of the picture are parallel with the edges of the camera viewfinder or screen.



Once you have chosen the best photo, use a computer program, such as Microsoft Office Picture Manager, to crop out any borders and to adjust the contrast and brightness to best match the colours of the original piece.

